

MONROVIA®

Since 1926



Itoh Peony Collection

A CROSS BETWEEN HERBACEOUS AND TREE PEONY, WITH HUGE COLORFUL BLOOMS ON STURDY STEMS, PERFECT FOR CUT FLOWERS.

A mature plant can produce 50+ blooms each season.

Lovely shrubby 3-ft tall plant with distinctive foliage.

Colors include pinks, purples, coppers, and yellows.

Dies back to ground in winter.

Fragrant blooms that range from sweet to slightly spicy.

Flowers are held upright on top of the bush and do not require support.



BARTZELLA ITOH PEONY
ZONES: 4-9



JULIA ROSE ITOH PEONY
ZONES: 4-9



CORA LOUISE ITOH PEONY
ZONES: 4-8



YUMI™ (BEAUTY) ITOH PEONY
ZONES: 4-8



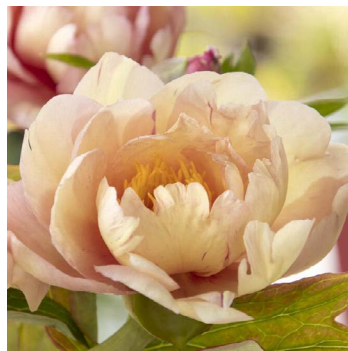
KEIKO™ (ADORED) ITOH PEONY
ZONES: 4-8



PINK ARDOUR ITOH PEONY
ZONES: 4-8



MISAKA™ (BEAUTIFUL BLOSSOM) ITOH PEONY
ZONES: 4-8



SINGING IN THE RAIN ITOH PEONY
ZONES: 4-8